



Hamilton Way, Palmers Green, London, N13
Chain Free £339,995 Freehold

Anthony Webb
ESTATE AGENTS

Hamilton Way, Palmers Green, London, N13

A CHAIN FREE rarely available one bedroom FREEHOLD house in excellent decorative order which would be ideal for first time buyers or buy to let investors (Potential rental income of £1200pcm)

Hamilton Way is a quiet cul-de-sac turning off Hamilton Crescent within a few minutes walk of Green Lanes shops, restaurants, bus routes and Palmers Green mainline station into Moorgate. There are numerous green spaces/walks within easy reach including The New River, Hazelwood recreation ground and Broomfield Park. Hazelwood primary school and Palmers Green Mosque are also a short walk away.

Communal Ground Service Charge is £330 per annum • Council tax bane C • Living room with wood floor and bay window • Modern fitted kitchen with tiled floor • First floor modern bathroom • Double bedroom with fitted wardrobe and wood floor • Loft space with pull down ladder • Electric heating • Double glazed windows • Communal gardens • Allocated parking space.

- One double bedroom
- End of terrace house
- Living room
- Modern kitchen/bathroom
- Double glazing/gas central heating
- Loft space
- Allocated parking space
- Communal gardens





Hamilton Way Palmers Green London N13 5LS

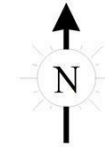
Tenure: Freehold
Gross Internal Area: 420.00 sq ft



Energy Efficiency Rating		Current	Potential
Very energy efficient - lower running costs			
(92 plus) A			
(81-91) B			
(69-80) C			
(55-68) D			
(39-54) E			
(21-38) F			
(1-20) G			
Not energy efficient - higher running costs			
England & Wales		EU Directive 2002/91/EC	
Environmental Impact (CO ₂) Rating		Current	Potential
Very environmentally friendly - lower CO ₂ emissions			
(92 plus) A			
(81-91) B			
(69-80) C			
(55-68) D			
(39-54) E			
(21-38) F			
(1-20) G			
Not environmentally friendly - higher CO ₂ emissions			
England & Wales		EU Directive 2002/91/EC	

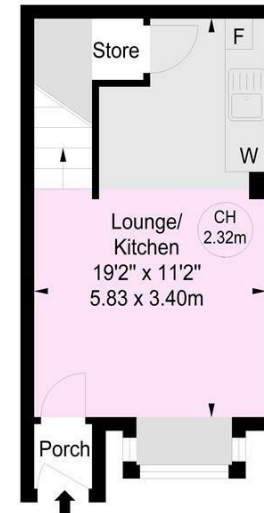
Hamilton Way, London, N13

Approximate gross internal area
41.62 sq m / 448 sq ft

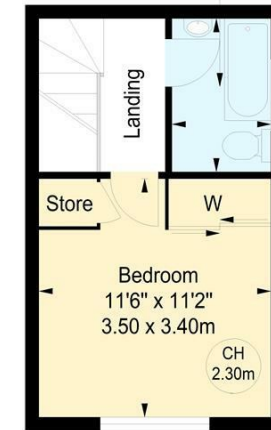


Key :
CH - Ceiling Height

Bathroom
7'10" x 4'9"
2.38 x 1.45m



Ground Floor



First Floor

This floor plan is for illustrative purposes only
and must not be relied upon as a statement of fact.

Property particulars as supplied by Anthony Webb Estate Agents are set out as a general outline in accordance with the Property Misdescriptions Act (1991) only for the guidance of intending purchasers of lessees, and do not constitute any part of an offer or contract. Details are given without any responsibility, and any intending purchasers, lessees or third parties should not rely on them as inspection or otherwise as to the correctness of each of them. We have not carried out a structural survey and the services, appliances and specific fittings have not been tested. All photographs, measurements, floor plans and distances referred to are given as a guide only and should not be relied upon for the purchase of carpets or any other fixtures statements or representations of fact, but must satisfy themselves by or of fittings, gardens, roof terraces, balconies and communal gardens as well as tenure and lease details cannot have their accuracy guaranteed for intending purchasers. Lease details, service ground rent (where applicable) are given as a guide only and should be checked and confirmed by your solicitor prior to exchange of contracts. no person in the employment of Anthony Webb has any authority to make any representation or warranty whatever in relation to this property.

348 Green Lanes, Palms Green, London N13 5TJ
020 8882 7888
palmsgreen@anthonywebb.co.uk
anthonywebb.co.uk

Anthony Webb
ESTATE AGENTS